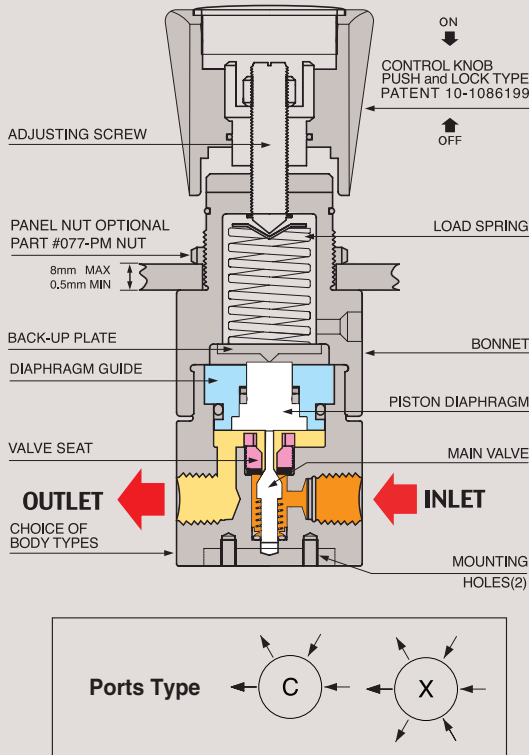


082 SERIES

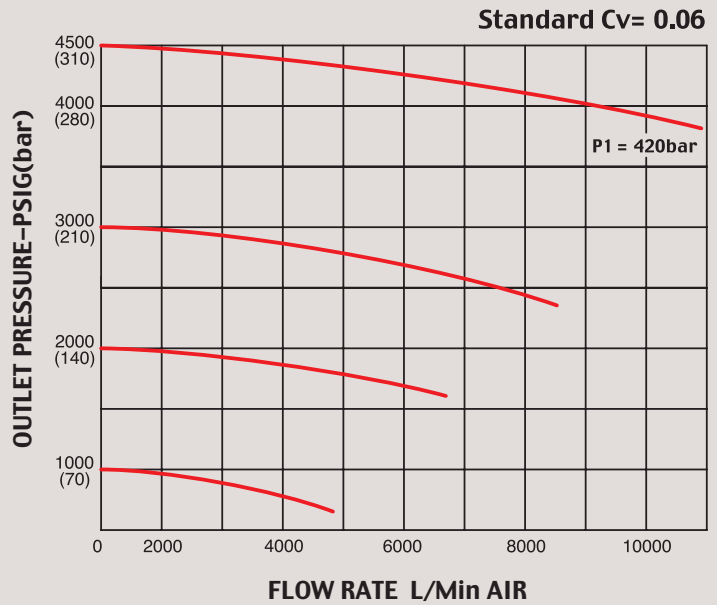
HIGH PRESSURE NPT TYPE



FUNCTIONAL SCHEMATIC



FLOW CHART



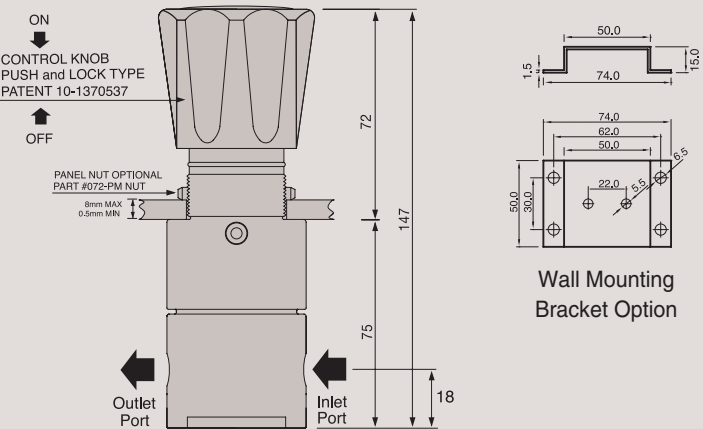
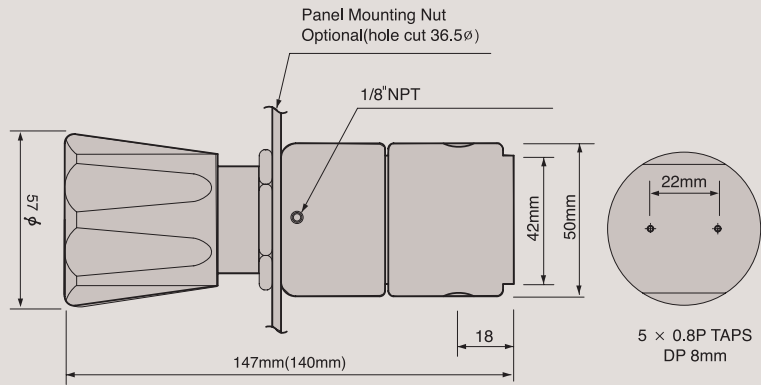
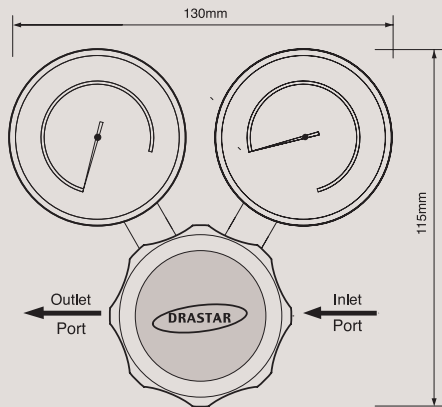
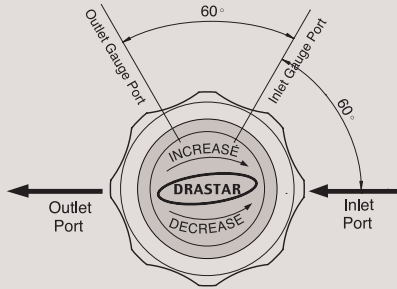
High Pressure NPT type (1/4")

SPECIFICATIONS

Ports	1/4" 4-ports NPT type
Leak Rate Certification	to 2x10 ⁻⁸ atm cc/sec Helium available.
Body Materials	082S-0000-1S / Stainless steel 316L 082B-0000-1S / Brass
Bonnet Material	Nickel Plated Forged Brass / Stainless steel 316L
Main Valve	Stainless steel 316L
Valve Spring	Stainless steel 316L
Valve Seat	Teflon® (Kel-F, Polyimide, etc.. Optional)
Inlet Pressure Range	6,000psig(420bar)
Outlet Pressure Ranges	1000(70bar), 2000(140bar), 3000psig(210bar), 4500psig(310bar)
Self-Venting	082X-0000-1S-V, Optional
Operating Temperature	-40° C - +70° C(-40° F - +160° F) (Standard) 082S-0000-1S-H1, +120° C (Optional) 082S-0000-1S-H2, +250° C (Optional)
Flow Capacity	Cv=0.06 (Cv=0.2 etc.. Optional)
Standard Optional	CGA, Inlet and Outlet Gauges, etc..

INSTALLATION DIMENSIONS
METRIC EQUIVALENTS ARE IN PARENTHESES

■ GAUGE PORT OPTIONS



082 Series is a 1/4" NPT type single-stage high pressure reducing regulator designed to use for gas cylinder and all high pressure gases more easily and safely with "Piston-Diaphragm" which Drastar specially developed.

With DRASTAR' s patented (patent #1086199) "push and lock type handle", you can operate it easily and stably; "locking" by pushing down the handle will prevent any slight change of pre-set pressure value, which could possibly be caused by any vibration from gas pipeline or ambient applications and the other way "unlocking" by pulling it back enables you to adjust the pressure value freely again.

Features & Applications

- 1/4" NPT type high pressure regulator
 - Drastar' s specially developed "piston-diaphragm" mounted
 - Inlet pressure is 6000psi(420bar) and outlet pressures are 1000psig (70 bar) ~ 4500psig(310bar)
 - Panel mounting nut or wall mounting bracket available as option • Design proof pressure: 150% of maximum rated
 - Applicable for gas and liquid in the field of various high purity gases, corrosive gases, pharmaceutical line, research labs, etc. (082S model made of stainless steel 316L for its internals and body)
- ※ DRASTAR' s all pressure regulators are assembled, cleaned, inspected, and packed in clean-room equipped with clean bench, helium detector, particle counter, ultrasonic cleaner, ultrapure water system, vacuum packaging machine, etc. through oxygen cleaning procedure in compliance with process and regulations indicated in CGA 4.1. and or ASTM G-93 and are free of any grease or oils.
- ※ **Caution:** Filtering (gas 7 μm~15 μm, water 15 μm~80 μm) is a MUST to use in the general gas application other than high purity gases. Otherwise, it may cause a failure to the regulators. It is strongly recommended to install filter for extension of life span and saving the maintenance expense

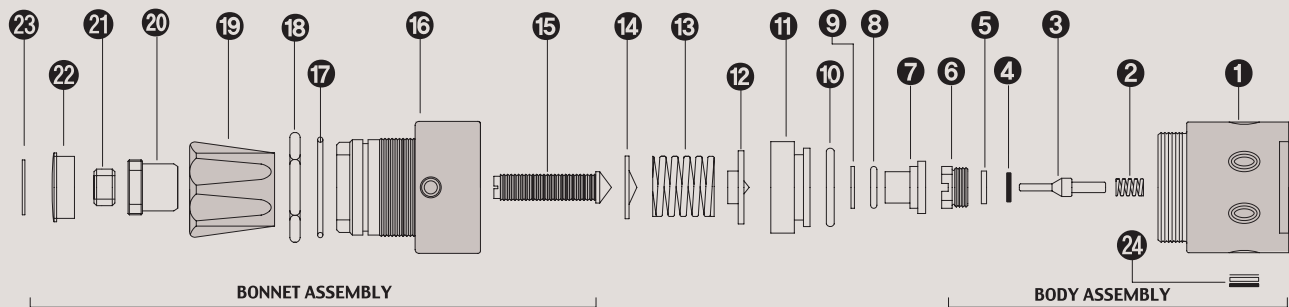
ORDERING INFORMATION

082 S - 1000 - 1S H - V - H1

BASIS SERIES NUMBER	BODY MATERIAL	OUTLET PRESSURE RANGE	FLOW CAPACITY	DIAPHRAGM MATERIAL	SELF VENTING	HIGH TEMPERATURE
Standard Inlet Pressure 6000psig (420 bar)	B = Brass S = Stainless Steel 316L	1000 = 10-1000psi (7-70bar) 2000 = 20-2000psi (15-140bar) 3000 = 30-3000psi (20-210bar) 4500 = 30-4500psi (30-310bar)	1 = 1/4" Female NPT 1S = Cv 0.06 Standard 1O = Cv 0.2 Optional	STS 316L Standard H = Hastelloy-C Optional	V = Self-Venting Optional	H1 = 120° C H2 = 250° C H3 = 350° C Optional

※ Note : 1) Outlet pressure 4500 model is not available with self-venting(V) 2) H1, H2, H3 option is not available for brass products.

082 SERIES PART LIST



STANDARD MODEL SERIES

Item No.	Description	Part No.	Model Application
01	Body	082-02-01	02-01 Stainless Steel 316L / 02-02 Brass Body / 02-03 Monel
02	Valve Spring	082-04-01	04-01 STS 316L / 04-03 Hastelloy C-22 / 04-04 Monel
03	Main Valve	082-06-01	06-01 STS 316L / 06-03 Hastelloy C-275 / 04-04 Monel
04	Valve Seat	082-10-01	10-01 PFA / 10-05 Vespel / 10-06 Peek
05	Valve Seat Cartridge	082-08-01	All Model Same
06	Locking Screw	082-12-01	All Model Same
07	Piston Diaphragm	082-18-01	All Model Same
08	Piston Diaphragm O-ring	082-18-00	All Model Same
09	Diaphragm Teflon Ring	082-18-00	All Model Same
10	Diaphragm Guide O-ring	082-18-00	All Model Same
11	Piston Diaphragm Guide	082-20-01	20-01 Series Stainless steel 316L / 20-02 Brass
12	Spring Plate	082-30-01	All Model Same
13	Load Spring	082-38-01	38-08 1000psi / 38-09 2000psi / 38-10 3000psi / 38-11 4500psi
14	Pivot	082-40-01	All Model Same
15	Adjusting Screw	082-42-01	All Model Same
16	Bonnet	082-44-02	44-02 Brass / 44-01 Stainless steel 304 Bonnet Optional
17	Push & Lock O-Ring	082-46-01	All Model Same
18	Panel mount Nut	082-48-01	All Model Same
19	Control Knob	082-50-01	50-01 ABS / 50-04 Aluminum Control knob Optional)
20	Push & Lock Handle nut	082-52-01	All Model Same
21	Locking Nut	082-54-01	All Model Same
22	Name Cap	082-56-01	56-01 ABS
23	Name Cap Plate	082-58-07	58-08 1000psi / 58-09 2000psi / 58-10 3000psi / 58-11 4500psi
24	Filter Assembly	082-60-02	All Model Same